

EVA

Digital Intraoral X-Ray System

Quick Start Guide



Box Includes:
EVA Digital X-Ray Sensor
Docking Station
Non-Sterile Protective Sheaths
Positioning Aids
EVA Driver CD
USB Cable
Registration Card

DENTIX[®]
An AFP Imaging Company

AFP Imaging Corporation
www.afpimaging.com

EVA Digital X-Ray System Quick Start Guide

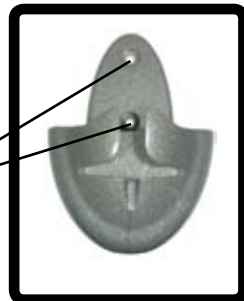
Hardware & ProImage Image Management Software Installation

Note: Please install the EVA driver labelled "USB Hardware and Twain Drivers Installation CD" prior to installing the hardware and Image Management software. Driver installation instructions have been included in a separate document. A user manual and help guide is provided on the software CD.

1. Separate the Sensor/Docking Station by gently pulling apart with an outward motion. Do not pull on the wire.



2. The Docking Station may be placed on a flat surface or mounted to a wall adjacent to the dental chair. When mounting, be aware that the Sensor Cable length is 6 1/2 feet (2 meters) and the USB cable (Docking Station to computer) is 16 1/2 feet (5 meters). Use two (2) 6-32 X 1/2" self tapping screws (included) for mounting the Docking Station. For other surfaces, use appropriate mounting hardware or Velcro strips.



3. The Sensor Capsule may be stored in its Docking Station holder by gently sliding it into place. Allow the cable to hang free of knots or entanglement with the Docking Station.



4. Insert the Software CD into the CD drive of the computer. It should AutoRun. If it does not, click on the “Start” button in the lower left-hand corner of the desktop and select “Run”. Browse to “setup.exe” on the CD and click on “OK”. Follow the prompts for installing the program on your computer.

5. After software installation is complete, connect the square end of the USB cable to the Docking Station socket:



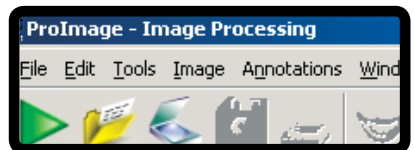
6. Connect the other end of the USB cable to the USB port on the computer. Verify the Sensor is plugged into the Docking Station. The computer will recognize the new hardware. Follow prompts to install USB hardware drivers. If using Prolmage Image Management Software, continue to following instructions. If using other Image Management software, please refer to its user manual.



7. Launch the Prolmage software by double clicking on the icon on the right.



The image management software will always start in the Image Processing Screen as shown. The Update Patient window will open and display a demo patient. Close this window by clicking on the Main Screen button located at the bottom of the page before continuing.



Taking the First Radiograph

1. Before capturing X-Ray images, both the Dentist and the Patient information must be entered into the database. The Dentist information is needed first. Click on the File menu to drop down the menu:



Click on “Add Dentist.” The “New Dentist” window will appear.

2. After filling in the information, click on the “Add Dentist” button and a message should appear notifying that the dentist has been added to the database.

3. Click on “File” and then on “Add New Patient.” The “Add a New Patient” window will appear. Fill in the information and click on the “Add Patient” button to complete the initial setup for the patient. Click “Exit”.

4. Click on the “Update Patient” symbol. The “Update Patient” window will appear. Click on the down arrows next to “Patient Name” and “Tooth Template” to select from the drop-down lists. Click on the “X-Ray images” button.

5. The Tooth Template will appear with a tool bar at the top. Select “Standard Exposure Mode” from the upper left icons. Click on a template position for the desired radiograph. The position will turn blue. Repeat until all desired positions are selected in the order that you want to take them.

6. Click on the Tubehead icon on the tool bar to start/stop exposure. The position will turn red and the symbol will turn black and red. You now have 15 minutes (900 seconds) to make an exposure.



7. To make preparations for exposure, always put the sensor into a sheath, place the sensor in a positioning device (size 1 or 2), put into the mouth, and bring the X-Ray tubehead into position to make an exposure. Set the exposure to .08 seconds for the first radiograph.

8. Expose whenever ready within the 15 minute (900 second) period. The image will appear in the selected template position. Repeat for next image.

Double-click on the image to get an enlargement of the image in the “Image Processing Screen”. See the Prolmage Software Manual for additional details.

Made in U.S.A.

EVA is a registered trademark of AFP Imaging Corporation.
P/N 870-000082-B

DENT·X[®]
An AFP Imaging Company
www.afpimaging.com

AFP Imaging Corporation
250 Clearbrook Road
Elmsford, NY 10523 USA

1.800.592.6666
P 914.592.6100
F 914.592.6148