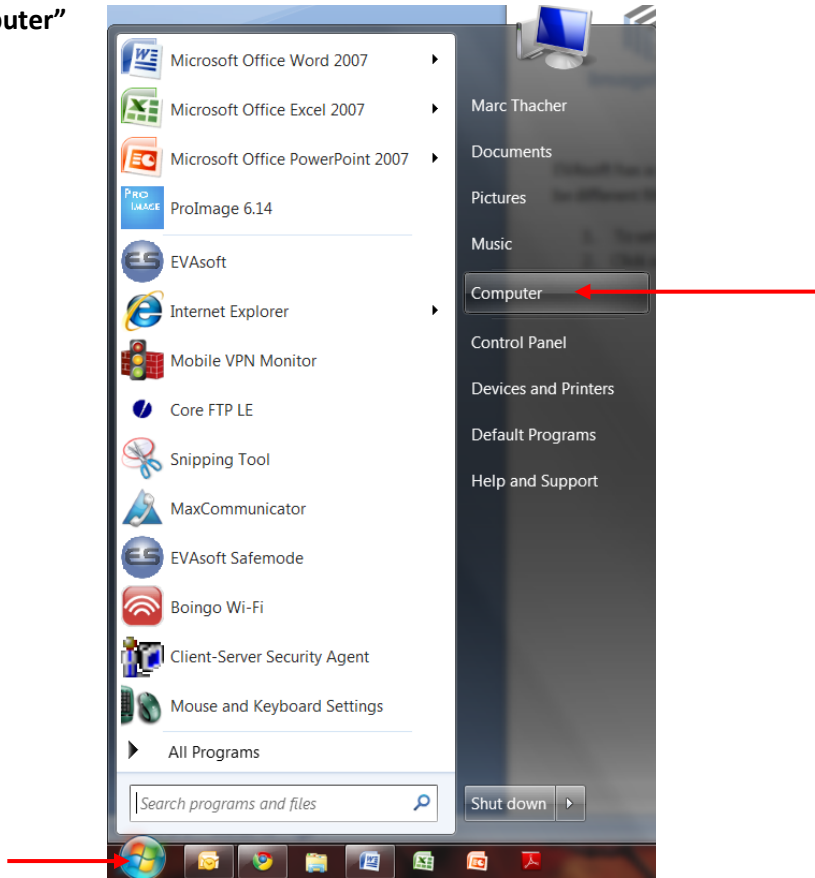


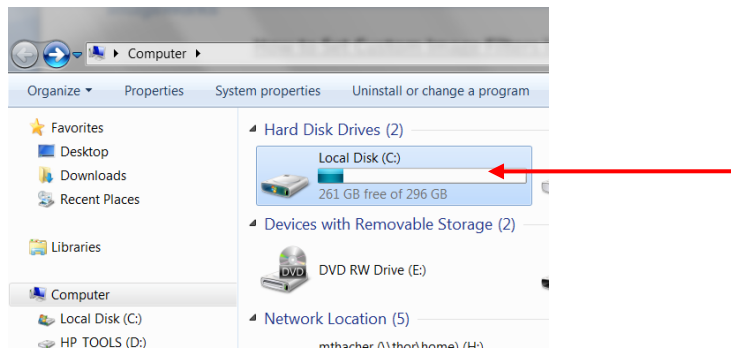
How to Set Custom Image Filters in EVAsoft

EVAsoft has a unique ability where a user can preset customer filters on a computer where x-rays are acquired. These can be different filters in each operatory in an office if they x-ray sources vary, or they can all be set to be the same filter.

1. To set the filter click on **“Start”** in the lower left hand corner of your computer screen and then click on **“Computer”**

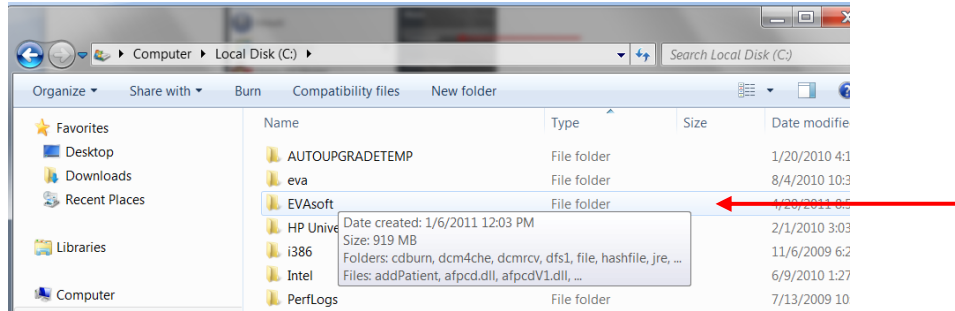


2. Double click on the **“C Drive”**

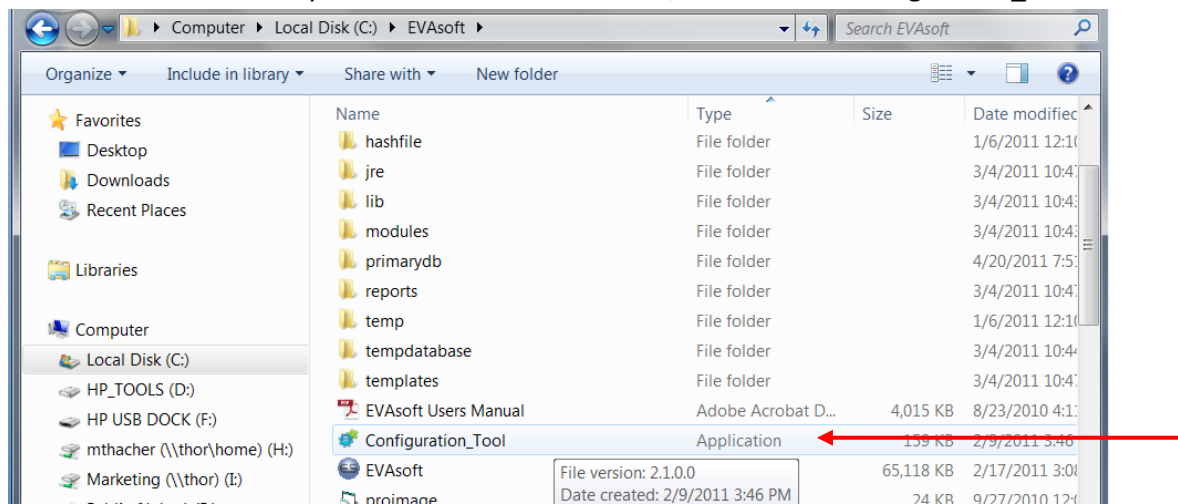




3. Double click on the **EVAsoft** folder, which is inside the C Drive



4. Inside the EVAsoft folder you will see the filter software, which is the **“Configuration_Tool.”** Double click it to open.



5. Click on the **EVA** tab at the top and check off any filter box that you would like. In some of the check boxes you can set the value of the filter. Please note that the Sharpen filter is preset to 4.4 and Window leveling is turning on. You can experiment with all of these filters with actual images in **EVAsoft’s Diagnosis View** tab.

