

EVA Drivers version 5.2 and TWAIN Installation Guide

It is very important to follow the correct order when installing the new drivers. The correct order is to always install the Eva drivers 5.2 after installing ProImage. This is due to the fact that previous versions of ProImage also install drivers and can overwrite the correct files. If at any time you install ProImage, always re-install the Eva drivers 5.2 as well.

It is not necessary to upgrade or re-install ProImage when upgrading the Eva drivers. The new Eva drivers 5.2 are backward compatible and will function correctly with previous versions of ProImage. Also, the InstallShield program will automatically handle older versions of the Eva drivers.

For [New Installations](#) of ProImage and Eva Drivers 5.2 go to Page 2.

For Current ProImage users [Upgrading](#) the Eva Drivers, go to Page 10.

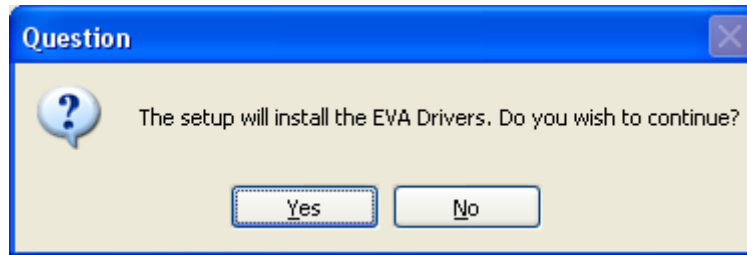
For instructions on installing the Eva Twain Drivers, follow the instructions for a new installation. At step 18 Select YES and go to page 11.

For instructions on using the Eva TWAIN application, go to page 16.

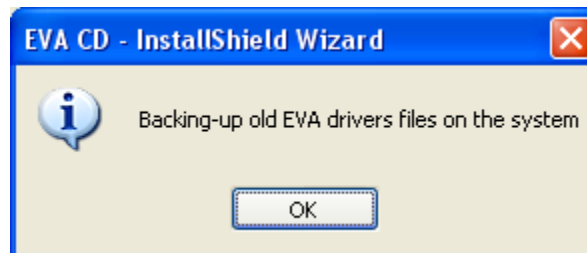
New Installation Directions

On a PC with Windows XP installed, follow the steps below. (If installing the drivers on Windows Vista, please see our Vista directions, available at www.afpimaging.com)

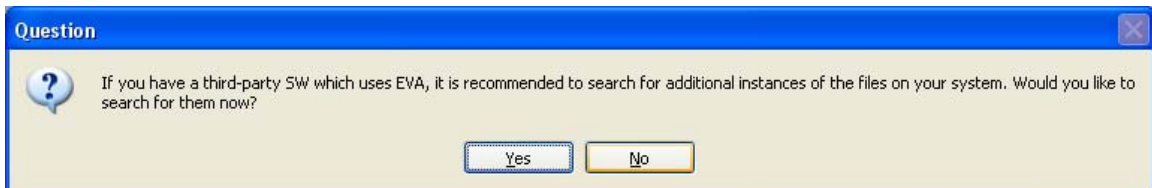
1. Insert the ProImage 6.12 CD and follow the InstallShield Wizard instructions.
2. Insert the USB Hardware & Twain Drivers Installation CD.
3. The following “Question” dialog will open.



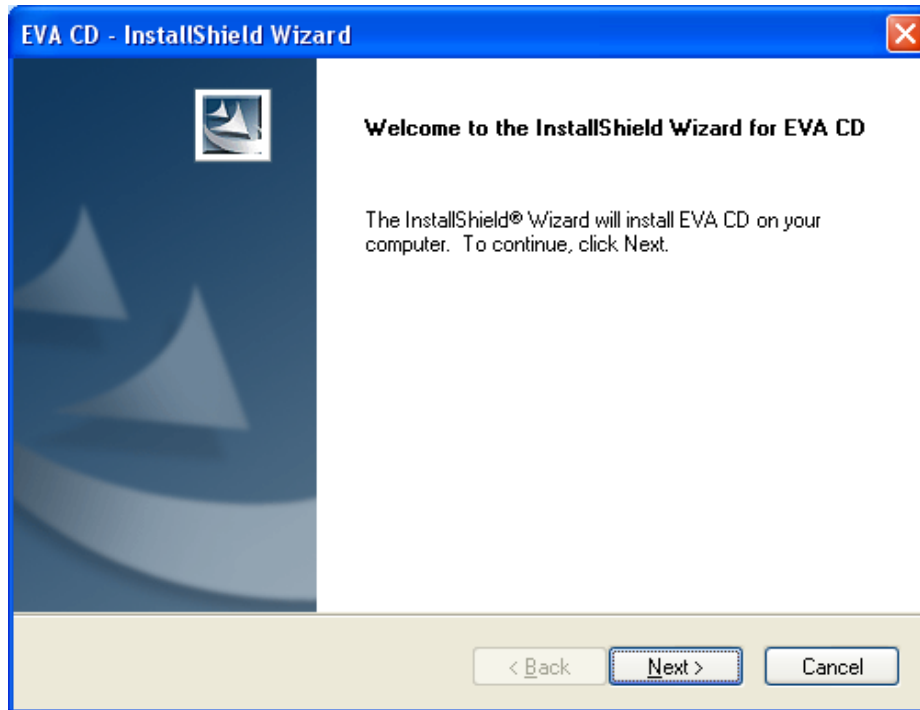
4. Click “Yes”
5. The installation program will check your computer for old copies of the EVA driver files.



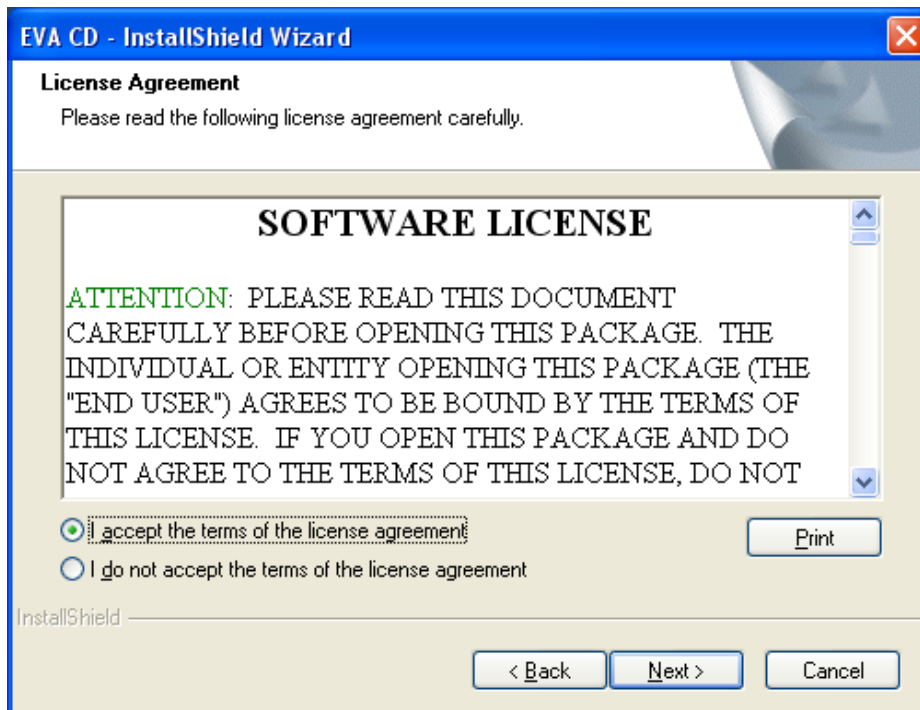
6. Click “OK”.
7. The following question dialog will appear.



8. Select “**Yes**” if you have installed any other third party software that may communicate with the EVA sensor. The EVA CD will then search the hard drive for other copies of the EVA.dll file and will rename them.
9. Select “**No**” if ProImage is the **only** digital imaging software installed on the computer.
10. The installation will then continue with the following dialog:

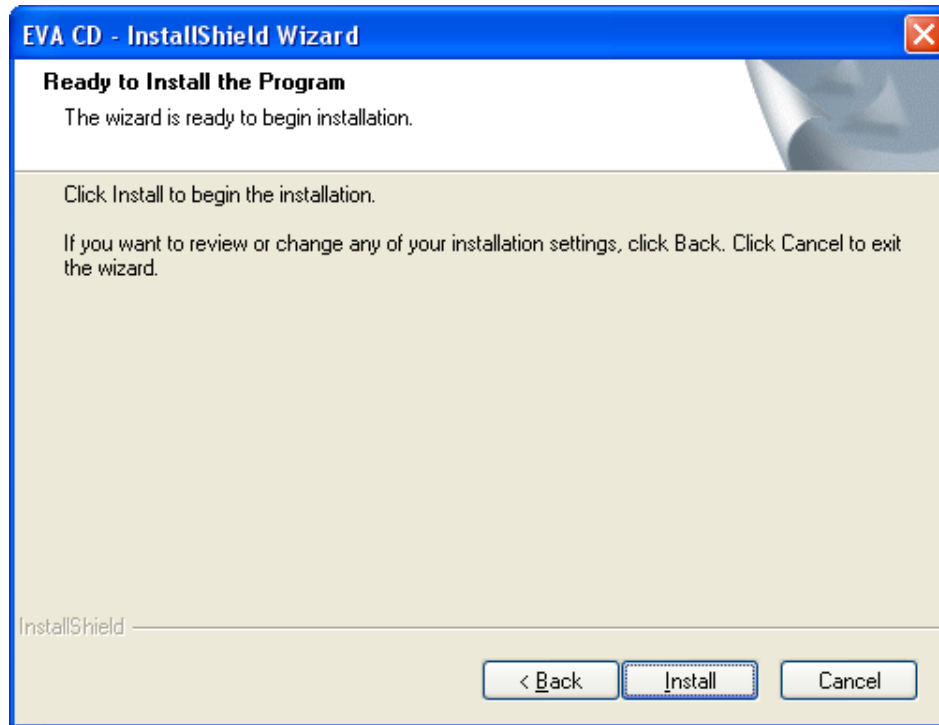


11. Click “Next”.



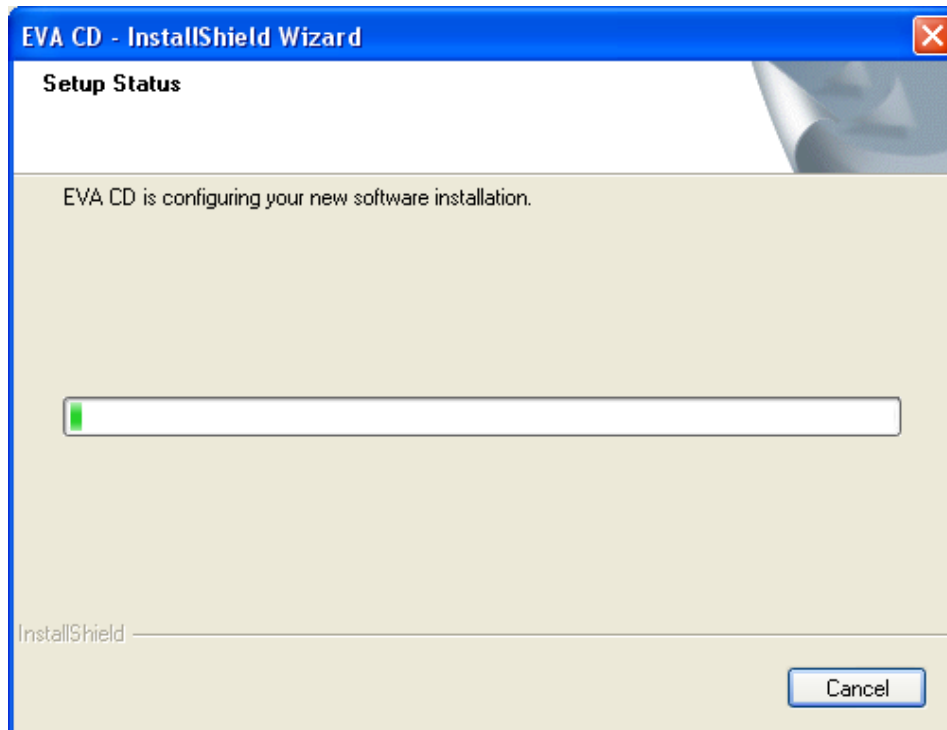
12. Select “I accept the terms of the license agreement”.

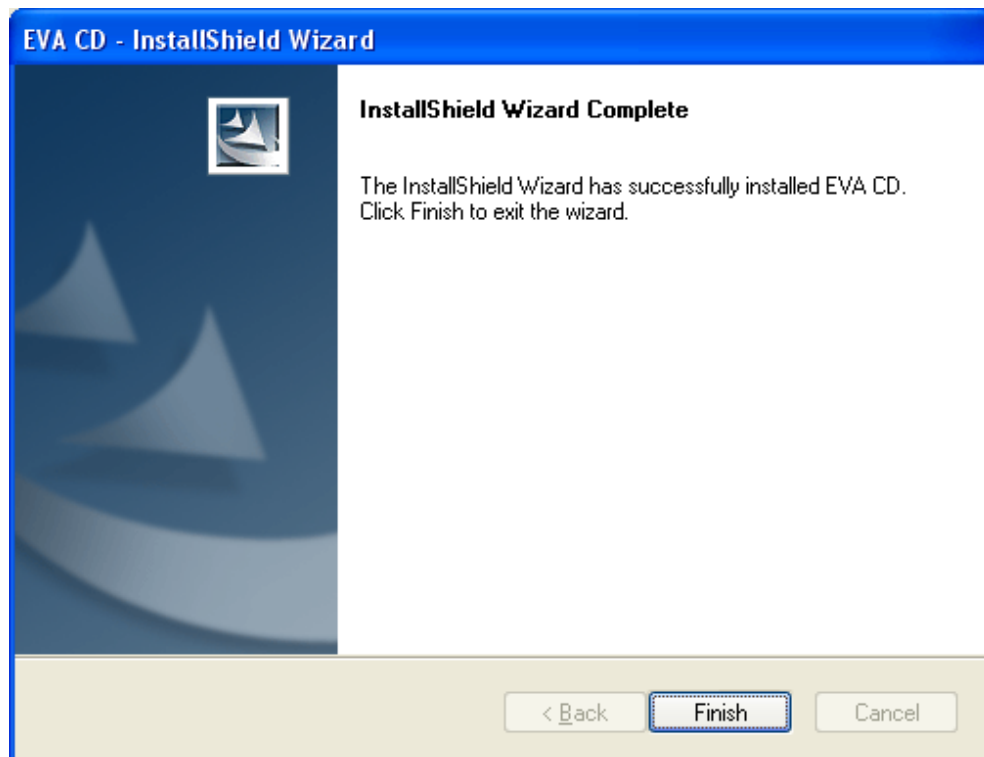
13. Click “Next”.



14. Click "Install".

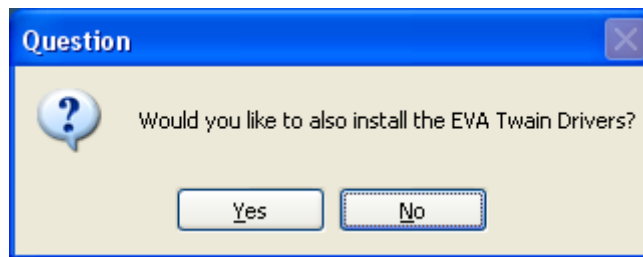
15. A progress bar will then be displayed. When finished, continue to next step.





16. Click “Finish”

17. The EVA CD will then ask the user if they wish to also install the TWAIN drivers.



18. Select “**Yes**” if you have installed any other third party software that may communicate with the EVA sensor via the **Twain** interface. For [TWAIN](#) installation directions, go to page 11.

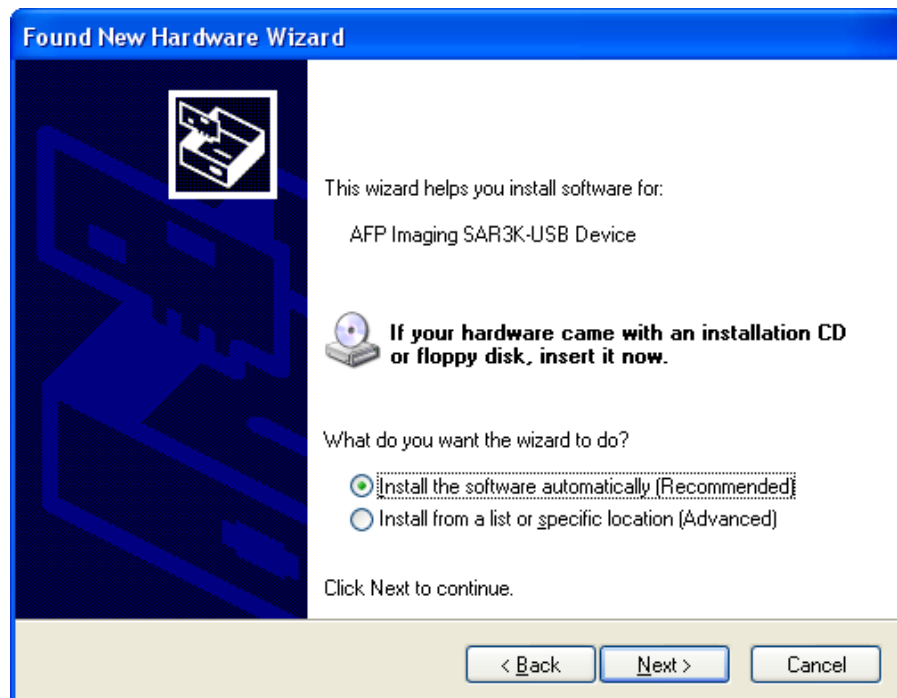
19. Select “**No**” if ProImage is the **only** digital imaging software installed on the computer.

20. Plug the EVA Digital Sensor into the USB 2.0 port.

21. The computer will display “Found New Hardware Wizard”

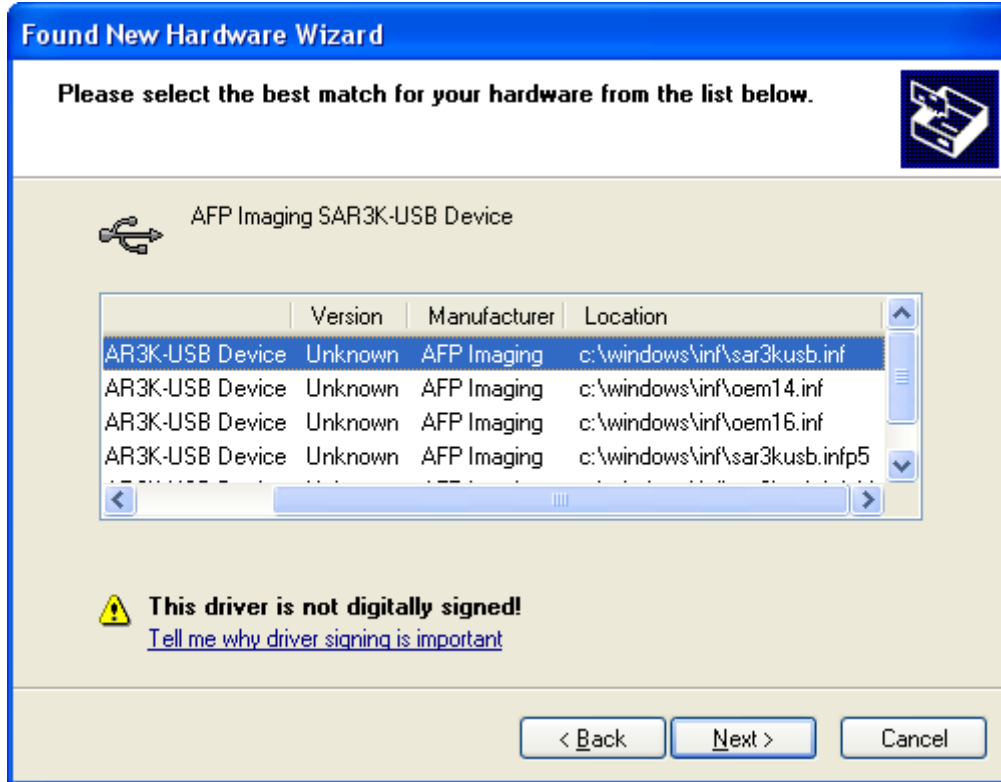


22. Click "Next".



23. Click "Next".

24. The following message MAY appear. It will list the possible drivers to choose from.

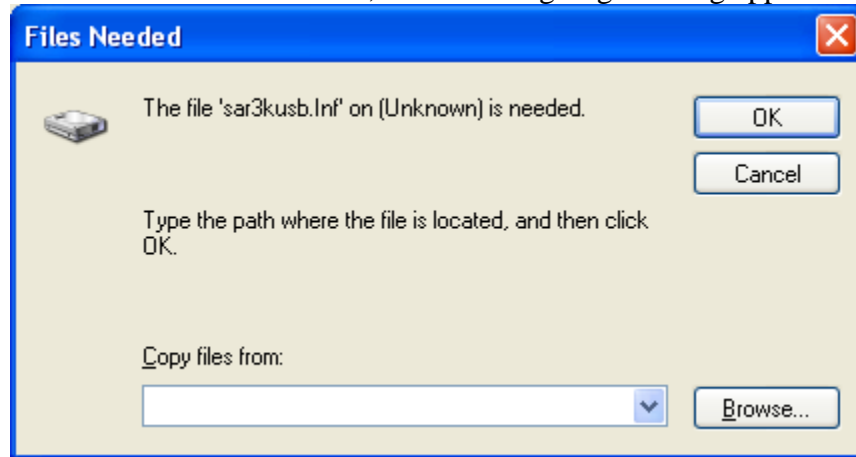


25. If displayed, select the file “C:\Windows\inf\sar3kusb.inf”.
26. Click “Next”.
27. In Windows XP, the following box will come up:



28. Choose “Continue Anyway”.

If the Wizard cannot find **sar3kusb.Inf**, the following might dialog appear:



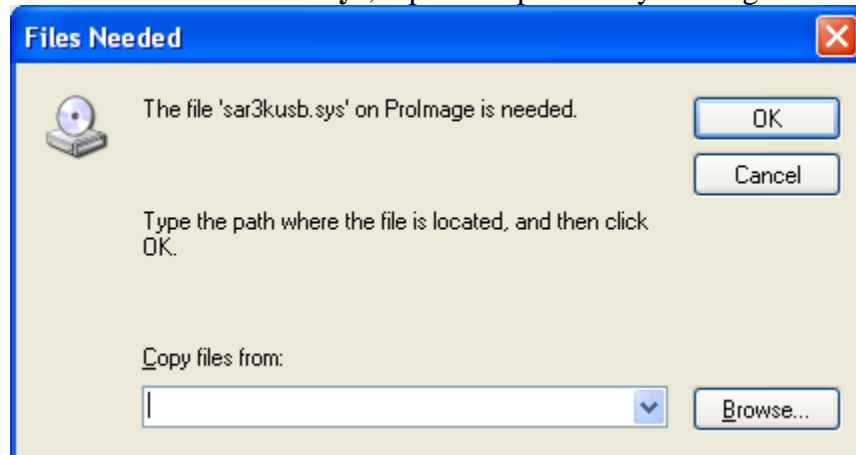
29. Click “Browse...”

30. Select the CD drive with the EVA Drivers CD in it and select the “Drivers” folder. (For example D:\Drivers)

31. Click “Open”.

32. Then Click “OK”.

If the Wizard cannot find **sar3kusb.sys**, repeat the process by looking on the CD.



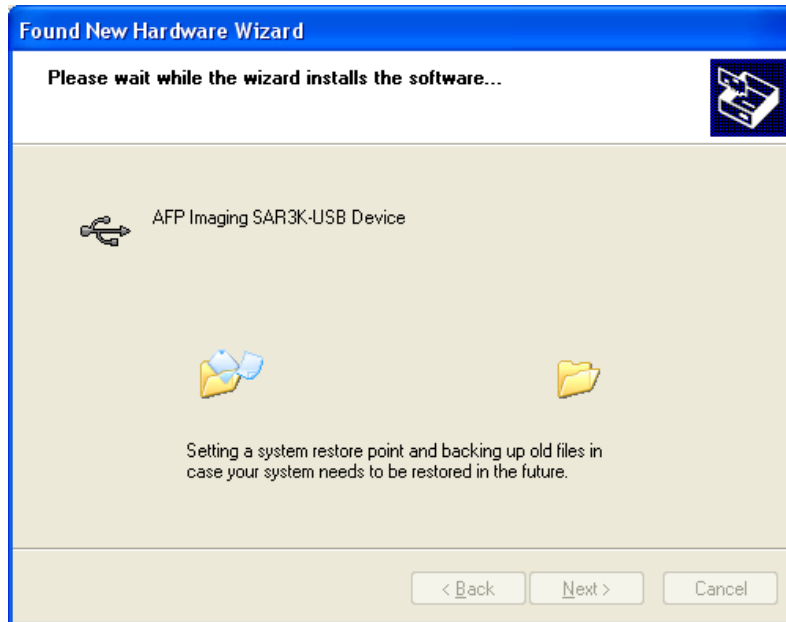
33. Click “Browse...”

34. Select the CD drive and select the “Drivers” folder. (For example D:\Drivers)

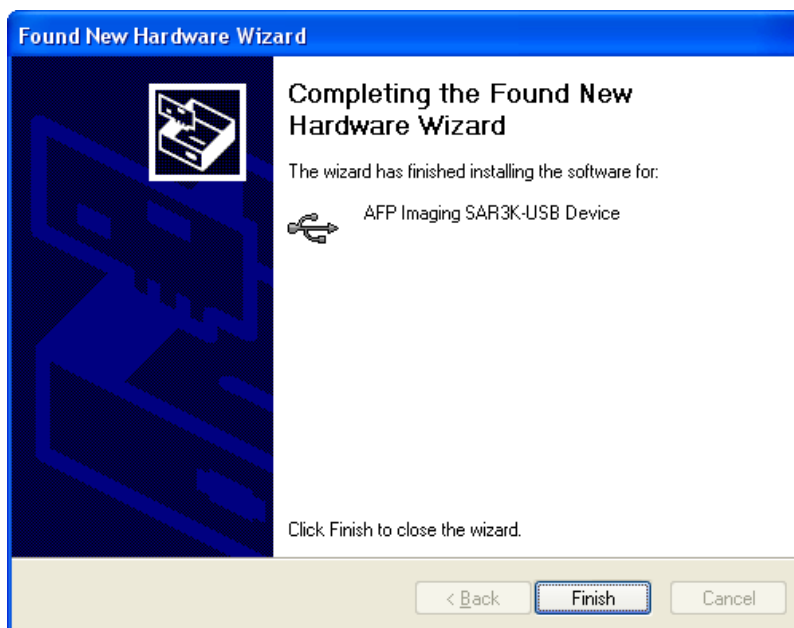
35. Click “Open”.

36. Then Click “OK”

37. The installation will now continue.



38. When finished, the following message will appear:



39. Click "Finish" to complete the installation.

40. Open ProImage 6.12.

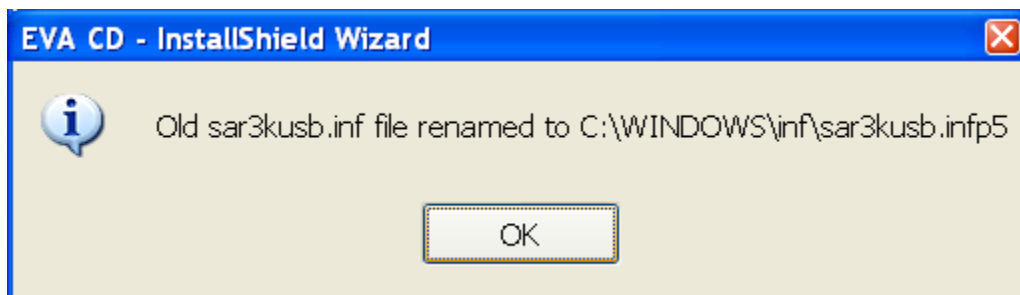
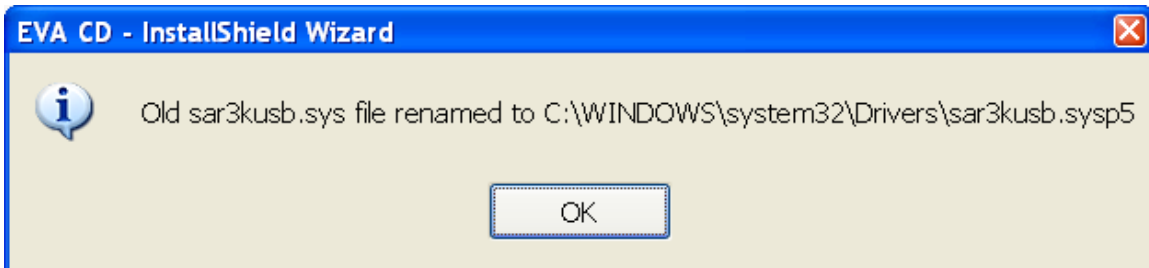
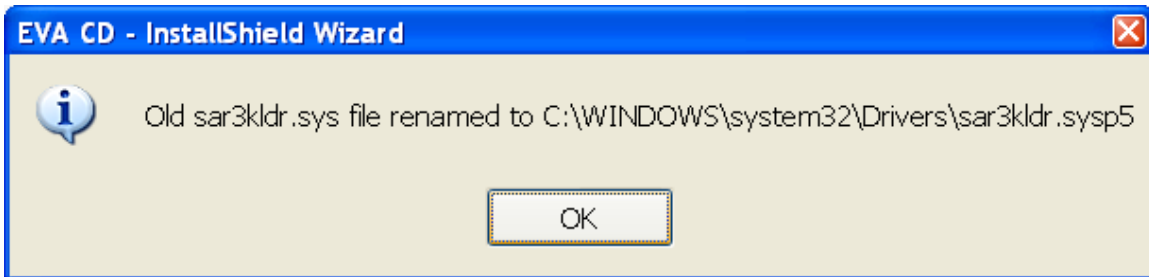
41. Capture test x-rays.

42. If using the TWAIN application, Right-click on the Eva icon in the system tray.
Select "Activate Sensor".

Existing Customer Upgrade Instructions:

On a PC with ProImage installed and the previous version of the Eva drivers, follow the steps below.

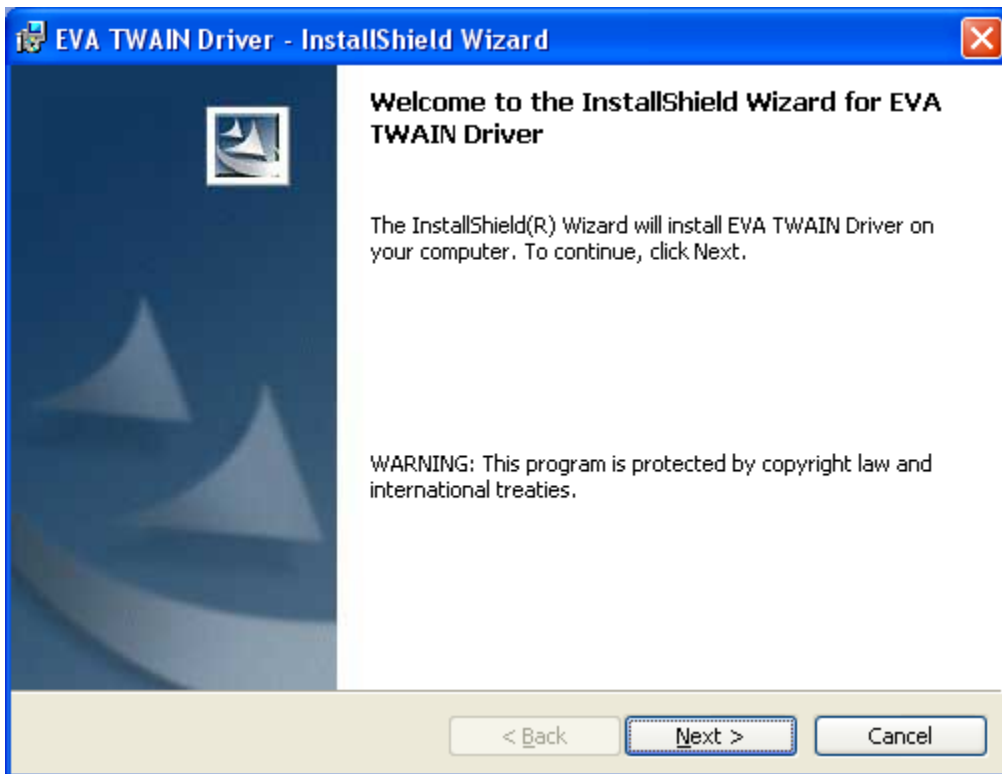
1. **Remove all EVA sensors.**
2. Insert the USB Hardware & Twain Drivers Installation CD.
3. Follow the steps above. If the installer finds old versions of the Eva driver files on the hard drive, it will prompt the user to acknowledge that the files are being renamed.
4. The following messages will appear, click OK.



Twain Driver Installation Directions

In order to install the Twain Drivers, it is necessary to first install the Eva Drivers. Follow steps 1 through 18; then follow these steps.

1. The following window will open.



2. Click "Next".

EVA TWAIN Driver - InstallShield Wizard

Customer Information
Please enter your information.

User Name:
[Text Input Field]

Organization:
[Text Input Field]

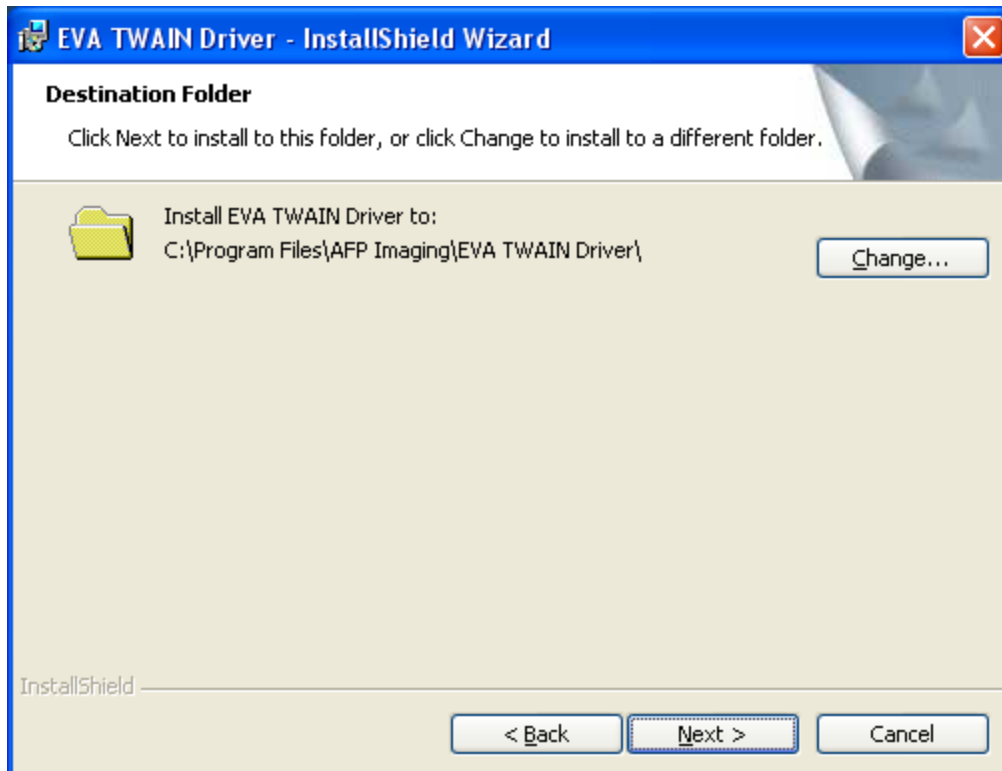
Install this application for:

- Anyone who uses this computer (all users)
- Only for me (Elena daSilva)

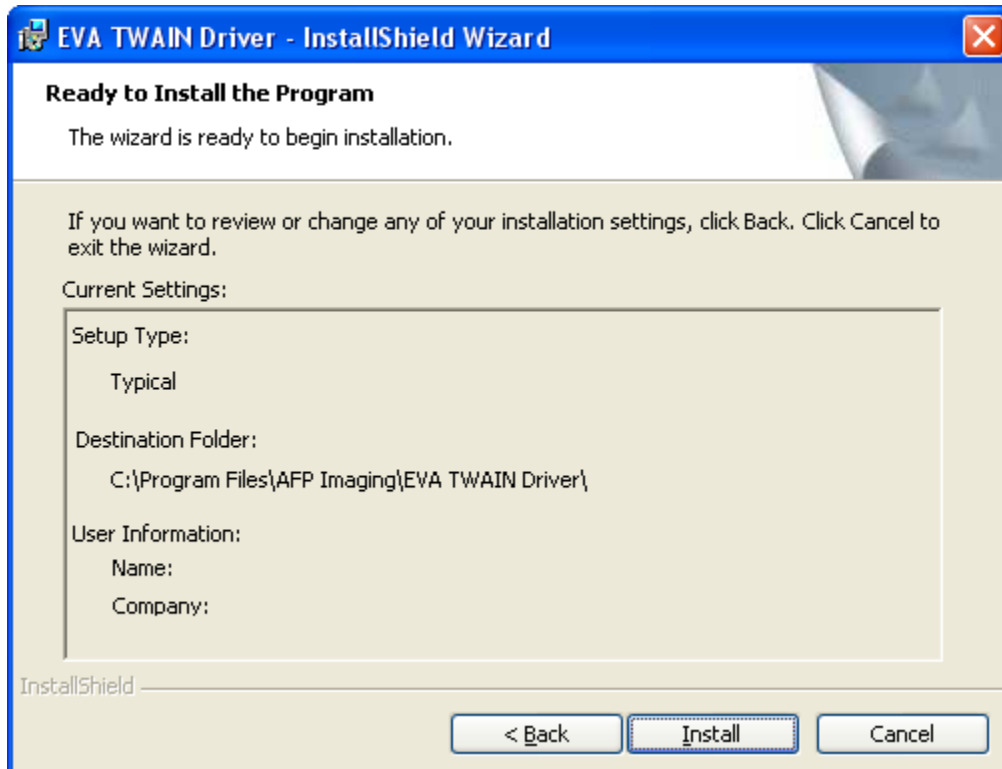
InstallShield

< Back Next > Cancel

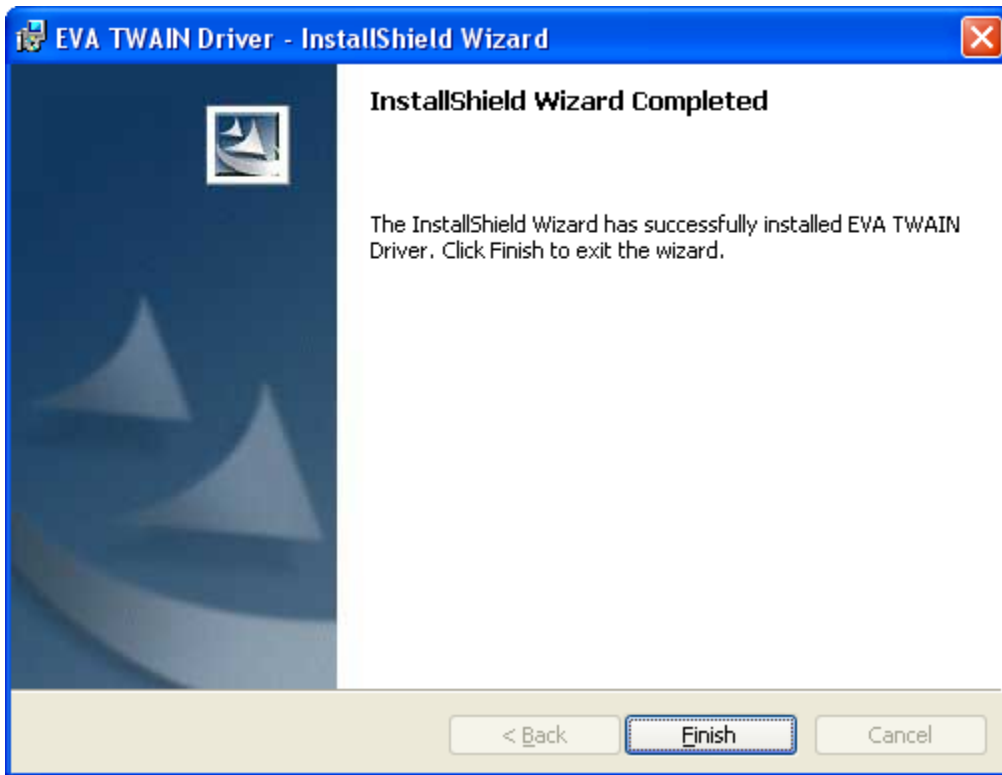
3. Enter you user information and click “Next”.



4. Click "Next".



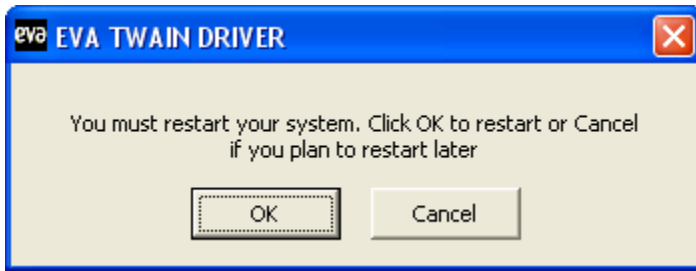
5. Click "Install".



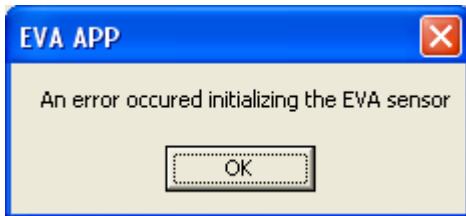
6. Click "Finish".



7. Select a language and click "Save Settings".





8. Click "OK" to restart the computer.
9. After the computer has restarted, go to Step 20 on page 5.
10. The following message may appear when the computer restarts, click OK.



EVA Twain Application


General Use:

A Small EVA Twain icon will appear in the system tray at the bottom of the screen. If the EVA sensor is not connected to the computer, the following EVA Twain icon will appear: .

To proceed, plug the EVA sensor to the USB port of the computer, right click on the EVA Twain icon and choose "Activate Sensor". Then, the EVA Twain icon will be replaced by: .

In case an error occurs while EVA is connected, the following icon will appear: .

Capturing images:

When capturing images with the EVA sensor, the following "EVA Images" blinking icon will also appear in the system tray (in addition to the EVA Twain icon): .

Left click on the "EVA Images" icon in order to view the captured images. All the captured images will appear in a viewing window. As new images are being captured, they will be added continuously in this window.

System limitation: The EVA Twain software will only keep up to 64 images in memory. It is recommended that the images be downloaded to the main imaging application after each patient full x-ray session.

*Directions for using the TWAIN device from a third party software application should be provided from that software application manufacturer. In most cases, there is an option to import images from the TWAIN devices available on the system.

Disconnecting EVA: When wishing to disconnect the EVA sensor, left click on the EVA Twain icon and choose "Remove Sensor". Then, unplug the EVA sensor.

Reconnecting EVA: Plug EVA into the computer via the USB port first. Wait until the green light shows up in the EVA docking station. Then, right click on the EVA Twain icon and choose "Activate Sensor".

Reconnecting after a sudden disconnect: If EVA has been disconnected and reconnected without clicking on "Remove Sensor" first, please left click on the EVA Twain icon and choose "Remove Sensor". Unplug the EVA sensor. Plug EVA back and wait until the green light shows up in the EVA docking station. Then, right click on the EVA Twain icon and choose "Activate Sensor".